

Terminations

DC-18 GHz

TYPE N COAXIAL FIXED TERMINATIONS

- Low VSWR
- Broadband
- Medium Power, Superior Performance
40W, 20W, 10W, 5W, and 1W Models



SPECIFICATIONS

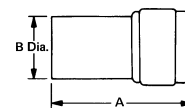
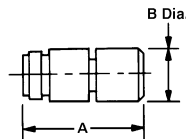
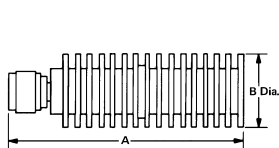
FREQUENCY RANGE (GHz)	MODEL	POWER**		VSWR* (Max)	WEIGHT	
		AVERAGE (Watts)	PEAK (kW)		Oz	Gr.
DC-12.4	376BN	40	7.5	1.10 +.025f	10	283
DC-18	378N	1	1	1.04 +.003f	3	85
	370BN	5	2	1.05 +.015f	3	85
	379BN	5	2	1.05 +.010f	3	85
	377BN	5	2	1.05 +.005f	3	85
	375BN	10	5	1.05 +.015f	3	85
	374BN	20	5	1.05 +.015f	5	142
2-18	367N	40	5	1.07 +.005f	9	255

When ordering, specify "M" for male and "F" for female connectors. i.e. 376BNM or 376BNF

*f denotes frequency in GHz.

**IMPORTANT NOTE: Power rating is specified at 25° and free air convection at atmospheric (760mm) pressure. Derate power capability linearly from stated value at 25°C to 0 watts at 135°C.

OUTLINE DRAWINGS



MODEL	A	B
367NM	7.57	1.78
367NF	7.25	1.78
374BNM	2.44	1.28
374BNF	2.25	1.28
376BNM	5.07	1.66
376BNF	4.91	1.66

MODEL	A	B
370BNM	1.67	.72
370BNF	1.58	.72
377BNM	1.67	.72
377BNF	1.58	.72
378NM	1.88	.72
378NF	1.83	.72
379BNM	1.67	.72
379BNF	1.58	.72

MODEL	A	B
375BNM	1.61	.70
375BNF	1.58	.76

All dimensions are Max. unless otherwise specified.

TYPICAL PERFORMANCE CURVES

